

PERFORMANCE OF SIX CORE INDUSTRIES

APRIL 2011
(Weight in IIP: 26.68 %)

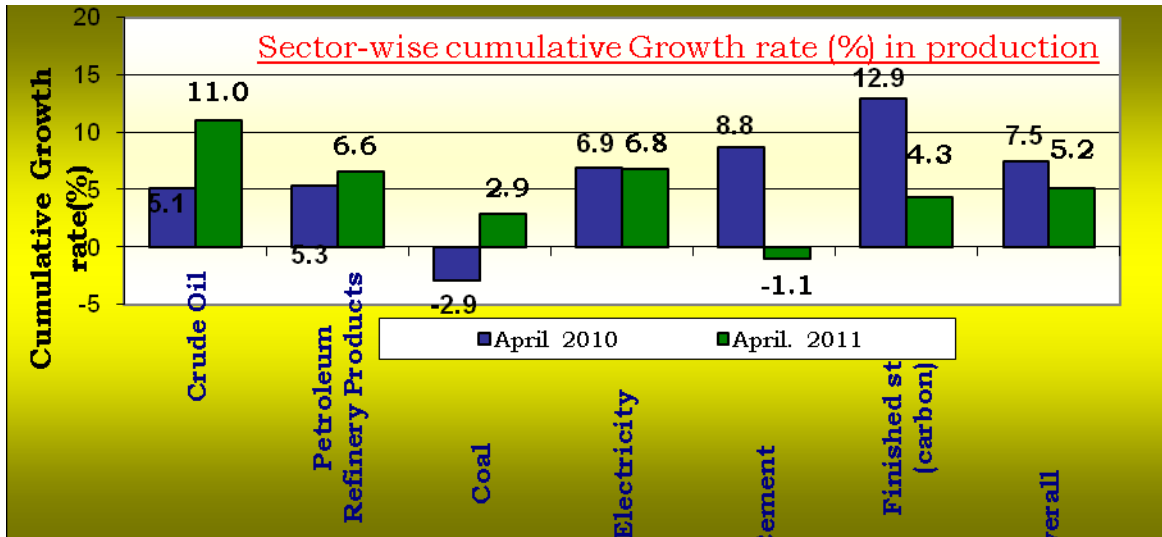
Base Year: 1993-94

Sector	Sector-wise Growth Rate (%) in production				
	Weights	April 2010	April. 2011	Apr-Mar. 2009-10	Apr-Mar. 2010-11
Crude Oil	4.17	5.1	11.0	0.5	11.9
Petroleum Refinery Products	2.00	5.3	6.6	-0.4	3.0
Coal	3.22	-2.9	2.9	8.1	-0.3
Electricity	10.17	6.9	6.8	6.2	5.5
Cement	1.99	8.8	-1.1	10.5	4.5
Finished steel (carbon)	5.13	12.9	4.3	5.4	8.2
Overall	26.68	7.5	5.2	5.5	5.8

Source of data : Concerned Ministries/Departments/Organisation(s)

	2009-10	2010-11	2011-12	2009-10	2010-11	2011-12
April	244.6	262.9	276.5	2.7	7.5	5.2
May	252.3	269.3		2.4	6.7	
June	252.1	261.4		7.4	3.7	
July	253.1	260.6		5.3	3.0	
August	253.3	265.0		6.3	4.6	
September	245.8	256.1		3.5	4.2	
October	256.9	280.1		4.0	9.0	
November	249.4	258.4		6.0	3.6	

December	264.5	280.6		7.7	6.1	
January	276.1	296.0		9.8	7.2	
February	251.8	268.9		4.2	6.8	
March	289.6	311.1		6.8	7.4	
Cumulative Total (April-March)	257.4	272.6		5.5	5.8	



CRUDE OIL PRODUCTION

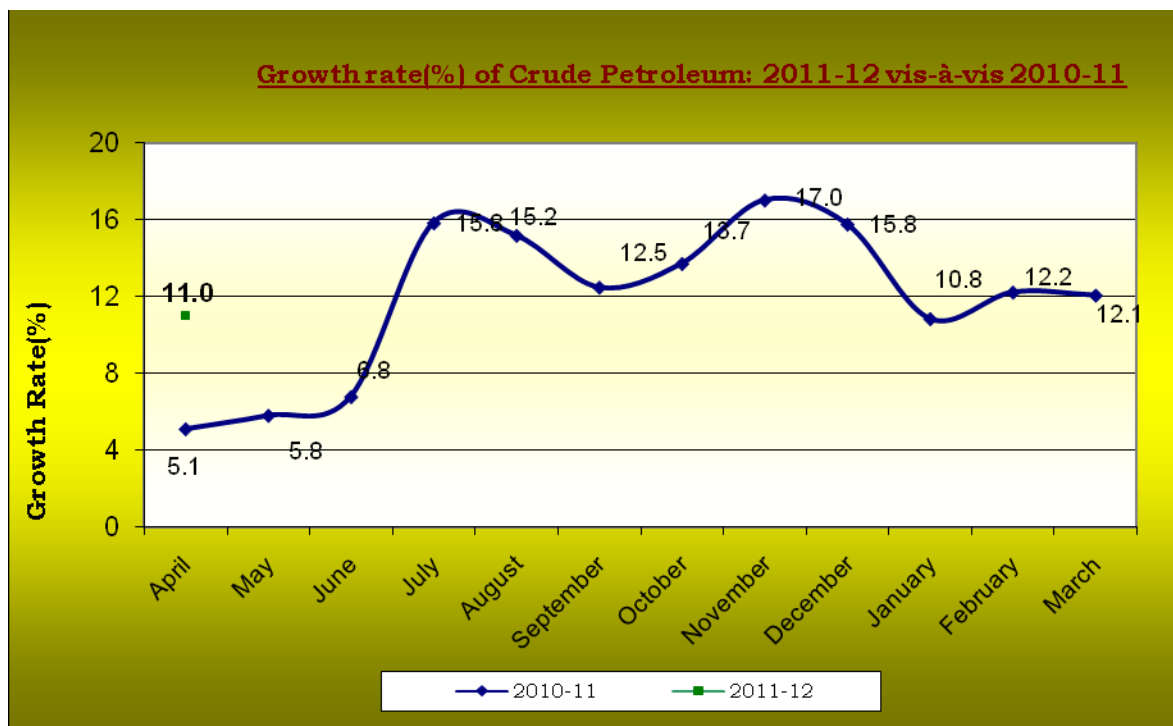
Weight: 4.17%

<i>Month</i>	<i>2009-10</i>	<i>2010-11</i>	<i>2011-12</i>	<i>2009-10</i>	<i>2010-11</i>	<i>2011-12</i>
April	2730	2870	3186	-3.1	5.1	11.0
May	2783	2945		-4.3	5.8	
June	2752	2939		4.0	6.8	
July	2790	3232		-0.4	15.8	
August	2775	3196		-2.5	15.2	
September	2770	3115		-0.5	12.5	
October	2855	3247		-2.1	13.7	
November	2793	3268		-1.6	17.0	
December	2905	3363		1.1	15.8	
January	2920	3236		9.8	10.8	
February	2661	2986		4.0	12.2	
March	2958	3315		3.5	12.1	
Cumulative Total (April-March)	33690	37712		0.5	11.9	

Note : 1. Cumulative total may not tally with monthly total ;

2. Production data and Growth rates are provisional.

Source : Ministry of Petroleum & Natural Gas



OUTPUT OF PETROLEUM REFINERY PRODUCTS

Weight: 2.00 %

<i>Output (in Thousand Tonnes)</i>						
<i>Month</i>	<i>2009-10</i>	<i>2010-11</i>	<i>2011-12</i>	<i>2009-10</i>	<i>2010-11</i>	<i>2011-12</i>
April	11597	12217	13025	-4.5	5.3	6.6
May	11874	12790		-4.3	7.7	
June	12208	12556		-3.8	2.9	
July	11396	12963		-14.4	13.7	
August	12856	12563		3.0	-2.3	
September	12597	11311		3.4	-10.2	
October	13266	12628		7.2	-4.8	
November	12500	12044		4.8	-3.7	

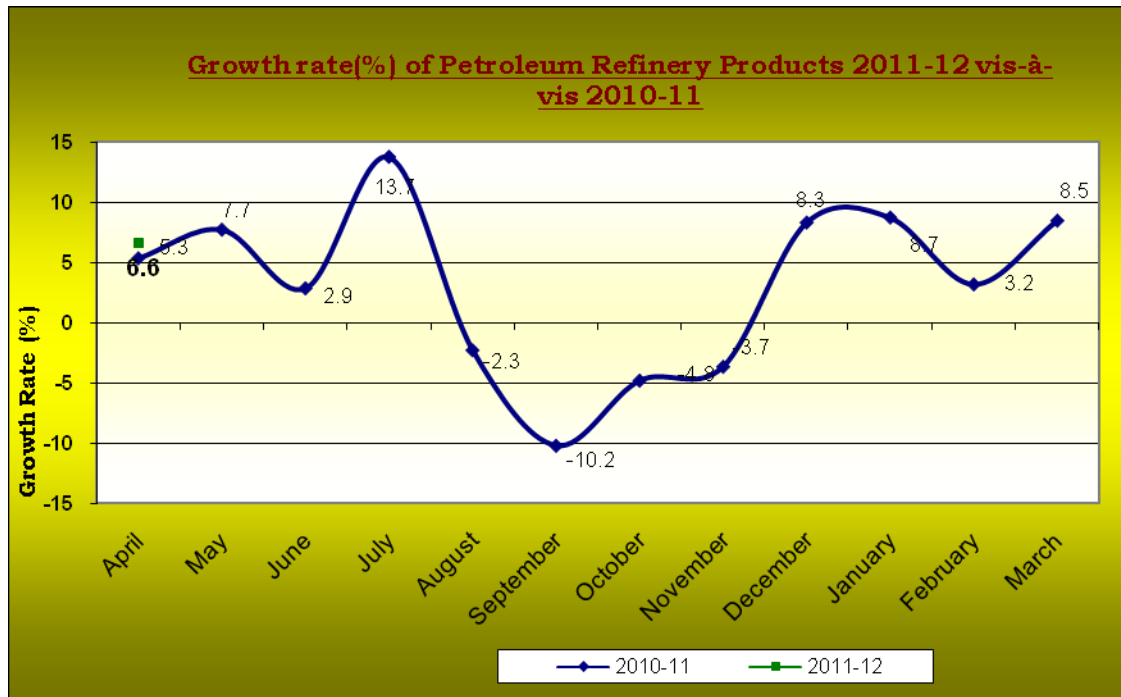
December	12628	13677		0.9	8.3
January	13025	14160		3.8	8.7
February	12039	12422		0.7	3.2
March	12863	13951		-1.1	8.5
Cumulative Total (April-March)	148831	153311		-0.5	3.0

Note : 1. Cumulative total may not tally with monthly total;

2. Output and Growth rates are provisional.

3. The figure are estimated on the basis of data on refinery production (in terms of crude throughput)

Source:Ministry of Petroleum & Natural Gas



COAL PRODUCTION

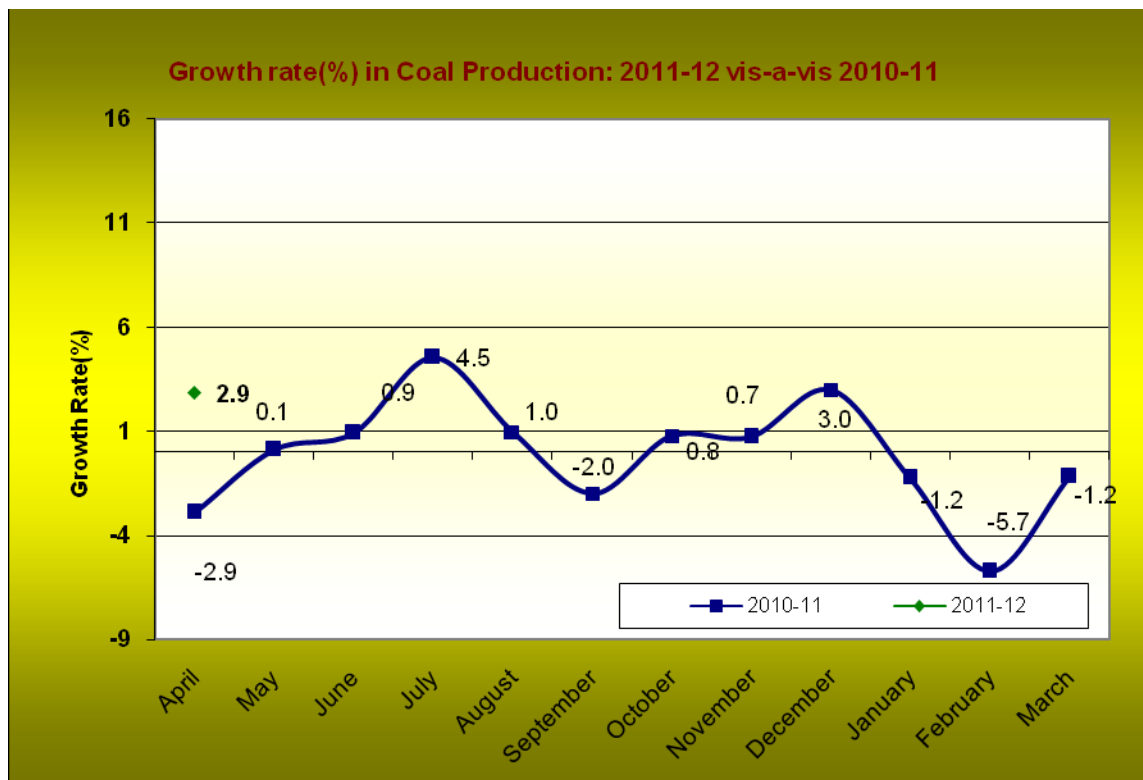
Weight: 3.22%

<i>Month</i>				<i>Output (in millionTonnes)</i>		
	<i>2009-10</i>	<i>2010-11</i>	<i>2011-12</i>	<i>2009-10</i>	<i>2010-11</i>	<i>2011-12</i>
April	39.99	38.83	39.94	14.2	-2.9	2.9
May	40.11	40.16		10.4	0.1	
June	39.38	39.75		15.2	0.9	
July	36.16	37.80		10.5	4.5	
August	37.80	38.17		13.3	1.0	
September	36.75	36.01		6.5	-2.0	
October	43.21	43.54		6.8	0.8	
November	45.01	45.35		4.7	0.7	
December	48.17	49.61		1.2	3.0	
January	51.08	50.46		5.4	-1.2	
February	49.63	46.78		6.7	-5.7	
March	60.25	59.55		8.0	-1.2	
Cumulative Total (April-March)	526.28	526.00		7.9	-0.1	

Note : 1. Cumulative total may not tally with monthly total ;

2. Production data and Growth rates are provisional.

Source : Department of Coal



ELECTRICITY GENERATION

Weight: 10.17%

<i>Month</i>	<i>Output (in Million Kwh)</i>			<i>Output (in Million Kwh)</i>		
	<i>2009-10</i>	<i>2010-11</i>	<i>2011-12</i>	<i>2009-10</i>	<i>2010-11</i>	<i>2011-12</i>
April	62779.9	67104.8	71660.9	6.7	6.9	6.8
May	63897.7	67998.5		3.0	6.4	
June	63046.0	65403.5		7.7	3.7	
July	63221.9	65805.8		3.8	4.1	
August	65809.9	66761.5		10.2	1.4	
September	63478.6	64688.3		7.4	1.9	
October	65101.1	70493.7		4.4	8.3	

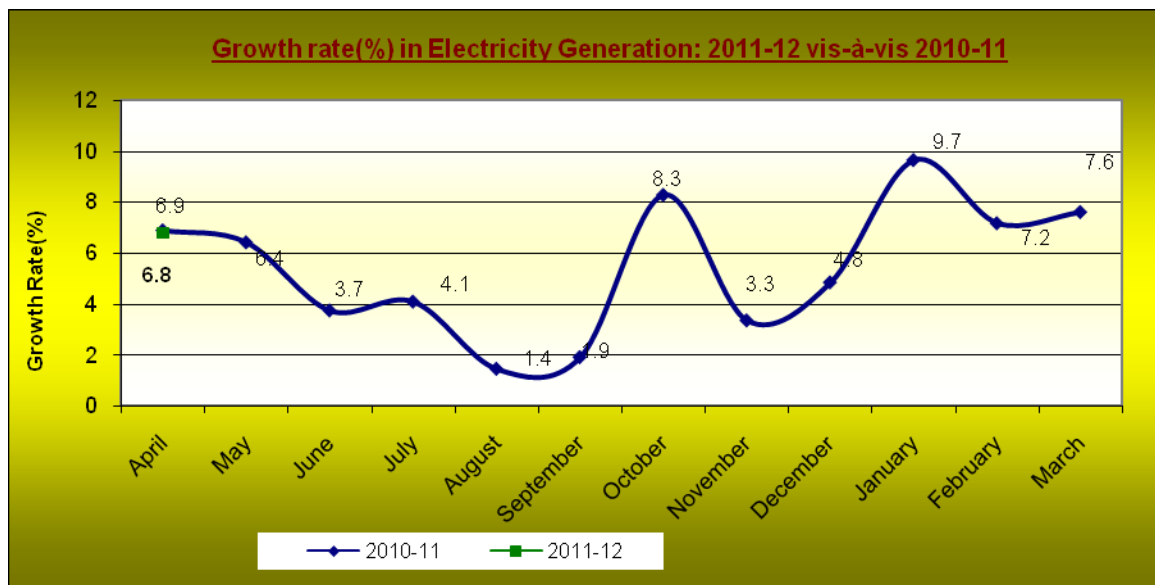
November	60141.2	62155.2		3.1	3.3	
December	64096.9	67202.5		6.6	4.8	
January	65346.6	71654.7		6.4	9.7	
February	61315.0	65711.9		6.9	7.2	
March	70193.8	75536.1		7.9	7.6	
Cumulative Total (April-March)	768428.7	811142.8		6.2	5.6	

Note : Cumulative total may not tally with monthly total;

Note : 1. Cumulative total may not tally with monthly total ;

2. Production data and Growth rates are provisional.

Source : Ministry of Power



CEMENT PRODUCTION

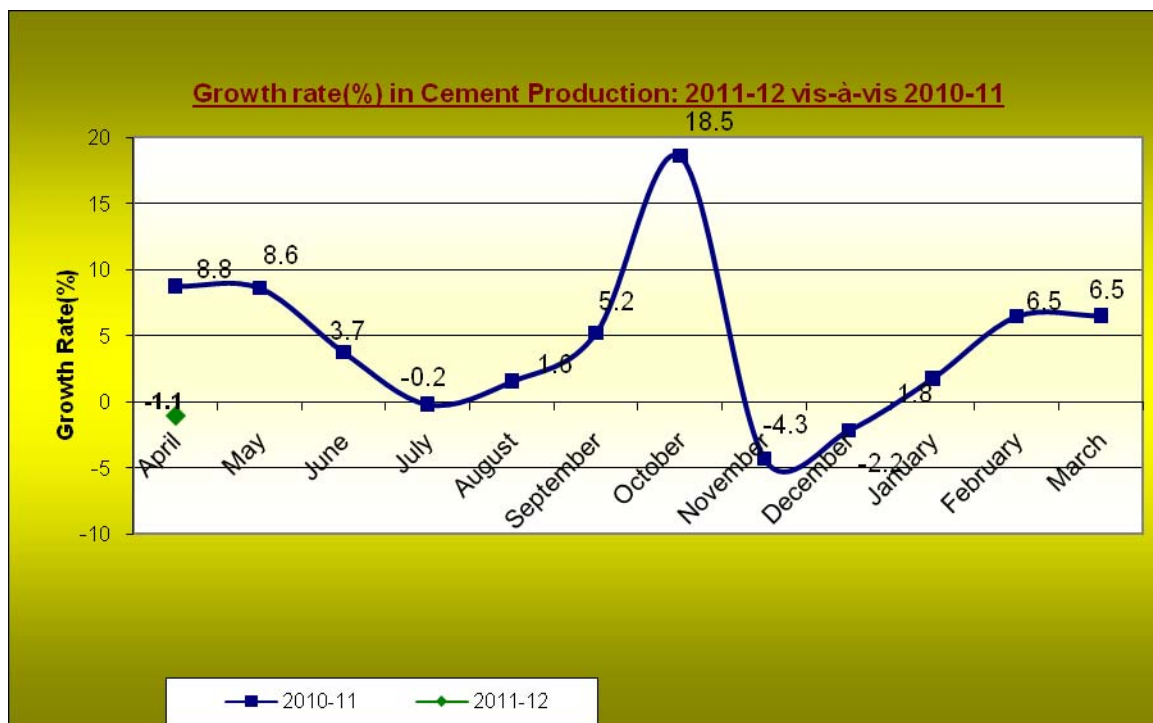
Weight: 1.99%

<i>Month</i>	<i>2009-10</i>	<i>2010-11</i>	<i>2011-12</i>	<i>2009-10</i>	<i>2010-11</i>	<i>2011-12</i>
April	17360	18880	18680	11.9	8.8	-1.1
May	17200	18680		11.8	8.6	
June	17080	17720		12.7	3.7	
July	16700	16670		13.8	-0.2	
August	16050	16300		17.5	1.6	
September	15330	16130		6.5	5.2	
October	16070	19050		5.3	18.5	
November	16180	15490		9.0	-4.3	
December	18110	17720		11.0	-2.2	
January	18690	19020		12.4	1.8	
February	17800	18950		7.9	6.5	
March	20060	21370		7.8	6.5	
Cumulative Total (April-March)	206630	215980		10.5	4.5	

Note : 1. Cumulative total may not tally with monthly total ;

2. Production and Growth rates are provisional.

Source : Department of Industrial Policy & Promotion



FINISHED (CARBON) STEEL PRODUCTION

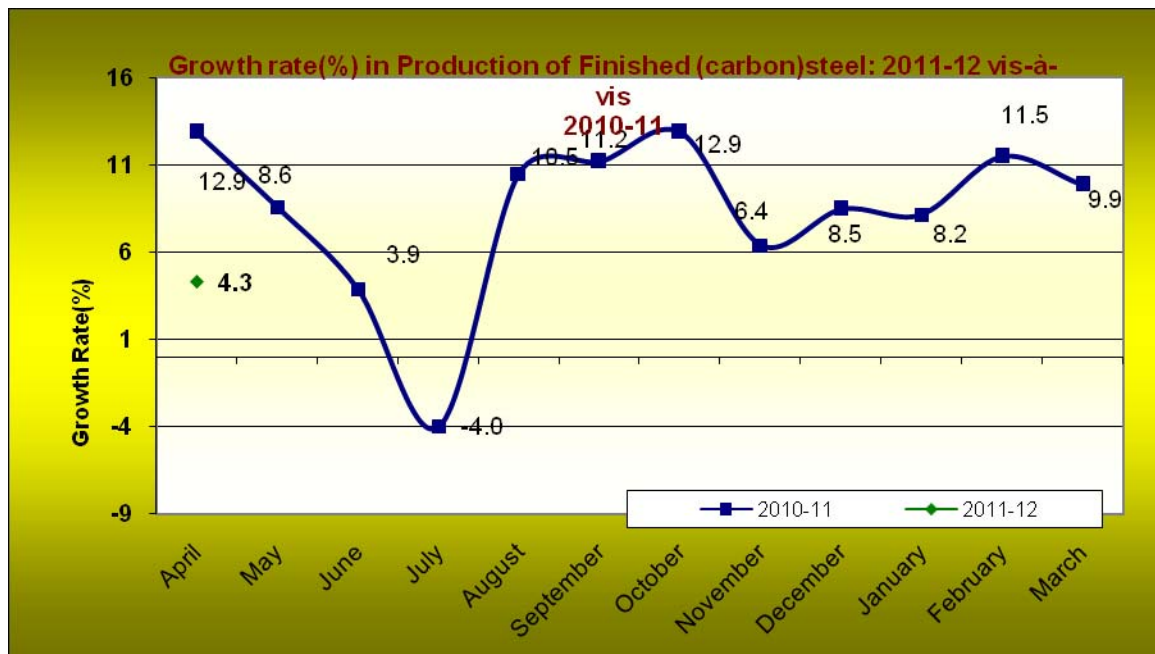
Weight: 5.13%

<i>Month</i>						
	<i>2009-10</i>	<i>2010-11</i>	<i>2011-12</i>	<i>2009-10</i>	<i>2010-11</i>	<i>2011-12</i>
April	4297	4851	5060	-5.0	12.9	4.3
May	4655	5055		0.0	8.6	
June	4739	4923		7.5	3.9	
July	5032	4831		11.4	-4.0	
August	4637	5124		-0.2	10.5	
September	4511	5016		-1.6	11.2	
October	4645	5244		2.7	12.9	
November	4652	4949		12.0	6.4	
December	4892	5307		15.4	8.5	

January	5309	5742		16.8	8.2
February	4473	4987		-0.2	11.5
March	5251	5770		7.7	9.9
Cumulative Total (April-March)	57093	61799		5.4	8.2

*Note : 1. Cumulative total May not tally with monthly total;
2. Production Data and Growth rates are provisional.*

Source : Ministry of Steel



DS/GK